

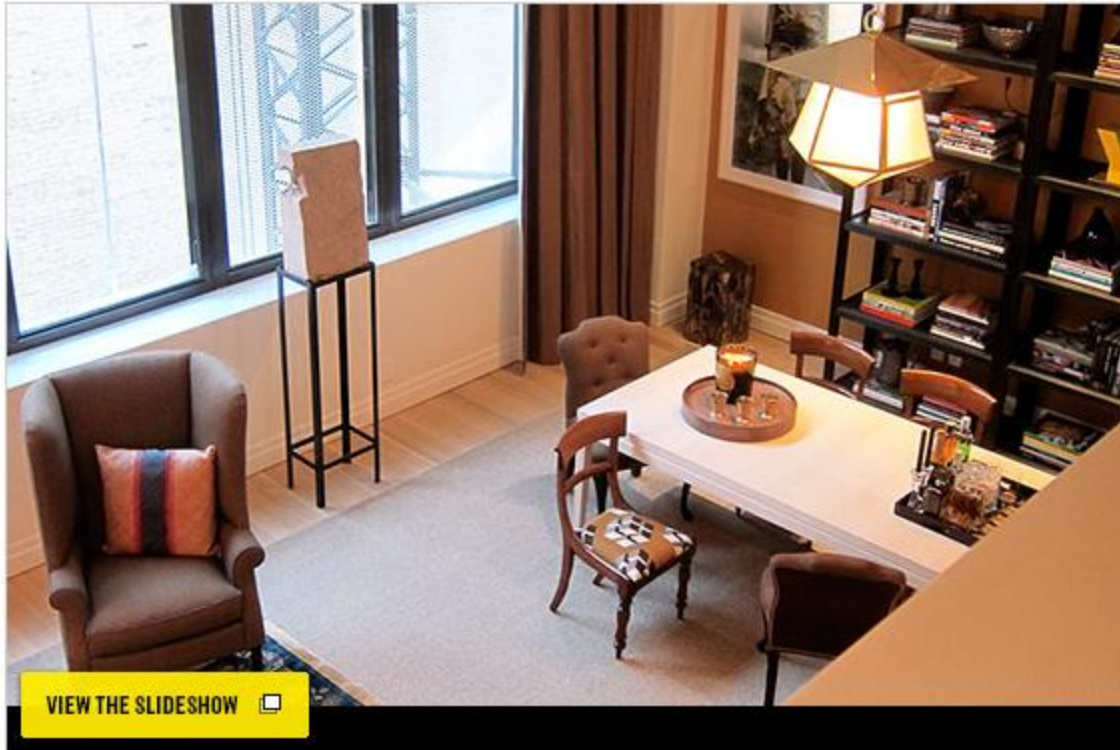
NEW YORK

Space of the Week: On Display

Interior designer Scott Sanders has his way with a West Village model apartment.

By Wendy Goodman Published Feb 6, 2014 [Share](#)

[1 Comment](#)



Scott Sanders is the latest interior designer (following Carrier and Company, Rafael de Cárdenas, workshop/apd, and Studio Tim Campbell) to deck the walls of the model condominiums in the recently renovated [Printing House](#). The 1910 building offers up noble industrial bones and eleven-foot-high windows that add drama to the living room of apartment 620, seen here from the second floor.



Every residence has a unique floor plan, but they all share the varied rhythms of shifting ceiling heights as one area opens to another. The entrance of 620 leads to the open kitchen and breakfast/work area. Sanders collaborated with artist Sean Mellyn on the art curation throughout. Here, *4 Barbras*, by Deborah Kass, comes courtesy of Paul Kasmin Gallery.

The sixteen-foot-high living room is anchored on one side by a wall of Sean Mellyn's silk-screen eye charts that complement the sisal rug layered with an antique silk Chinese carpet, both from Stark. And who doesn't love floor-to-ceiling curtains?

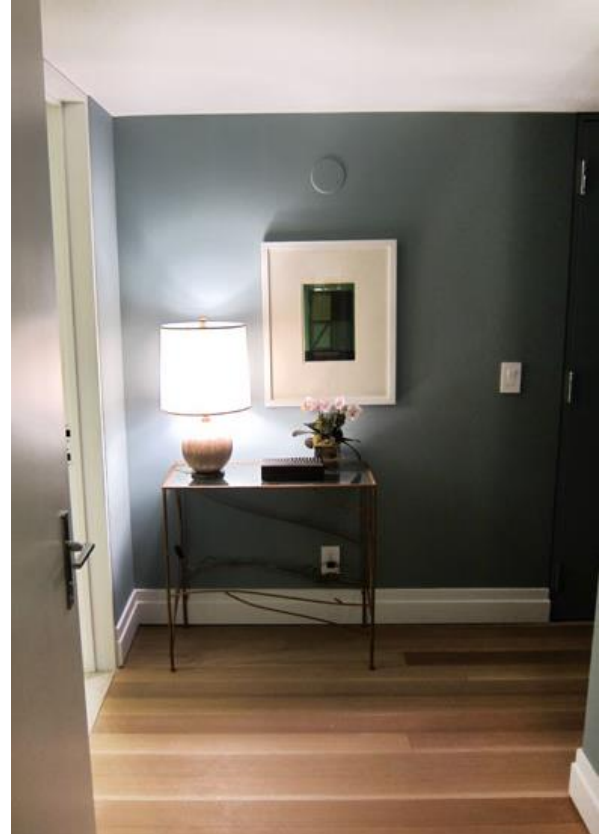


The opposite side of the living room features a glass-and-gold lantern from the Urban Electric Company hanging over the Comerford Collection bleached-pine table. The accompanying chairs are a mix of Frances side chairs from Liz O'Brien covered in a heavy woven wool with velvet buttons, and Sanders's own antique wood chairs with seats covered in a silk shantung Cubist print. The large photographs to the left of the black étagères from David Iatesta are by Jackie Nickerson.



Another view of the dining area off the kitchen looking toward the stairway. The glass-topped table with a polished walnut base is by Anthony Sisto of Antworkwood. The open-weave leather-strapped chairs are from John Rosselli & Associates.

Soothing pale blue walls lead you to the master suite off the first-floor entrance.



The bedroom windows dressed with ivory linen curtains from Kravet will soon have a view down to the garden below, currently being completed by Gunn Landscape Architecture.



This modernist sleigh bed is a custom design by Sanders from Dmitriy & Co. The two-tone bedding is from Serena & Lily, and the painting above is an oil on canvas by David Humphrey: *Horsey Love*.

Just in case you missed it: The regal portrait of Sanders's mini-dachshund, Bailey, graces a bedroom side table.



These seventies beer cans featured in the upstairs study are from Sanders's own collection. He estimates he has collected 145 cans over the years, starting when he was 12. The mid-century Hans Wegner chair is from Wyeth, and the desk is from Codor Design. The cabana area rug is by Stephanie Odegard.



Isn't the pièce de résistance always the bathroom? This opulent one on the first floor is worth the drum roll with Waterworks accessories and towels.